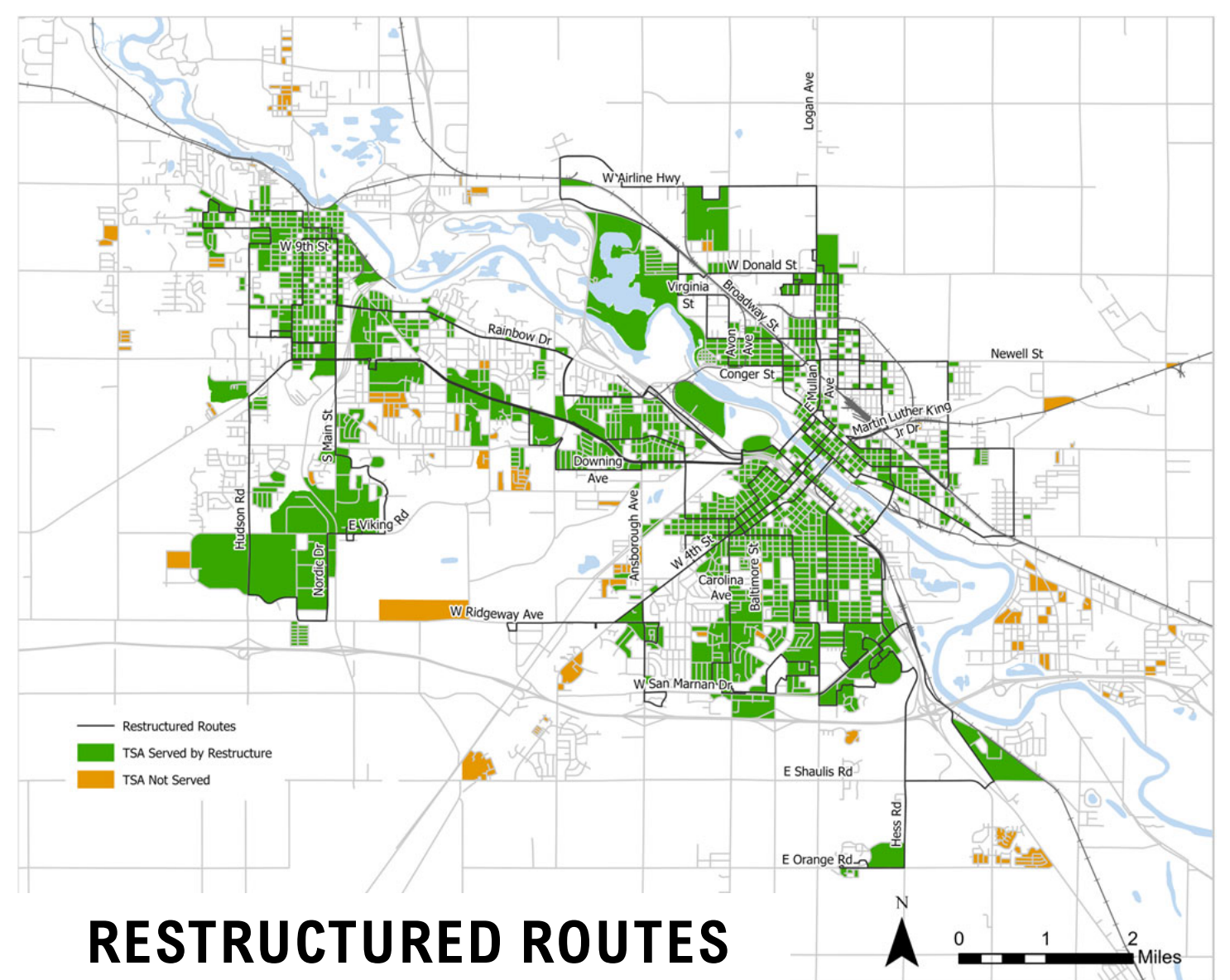
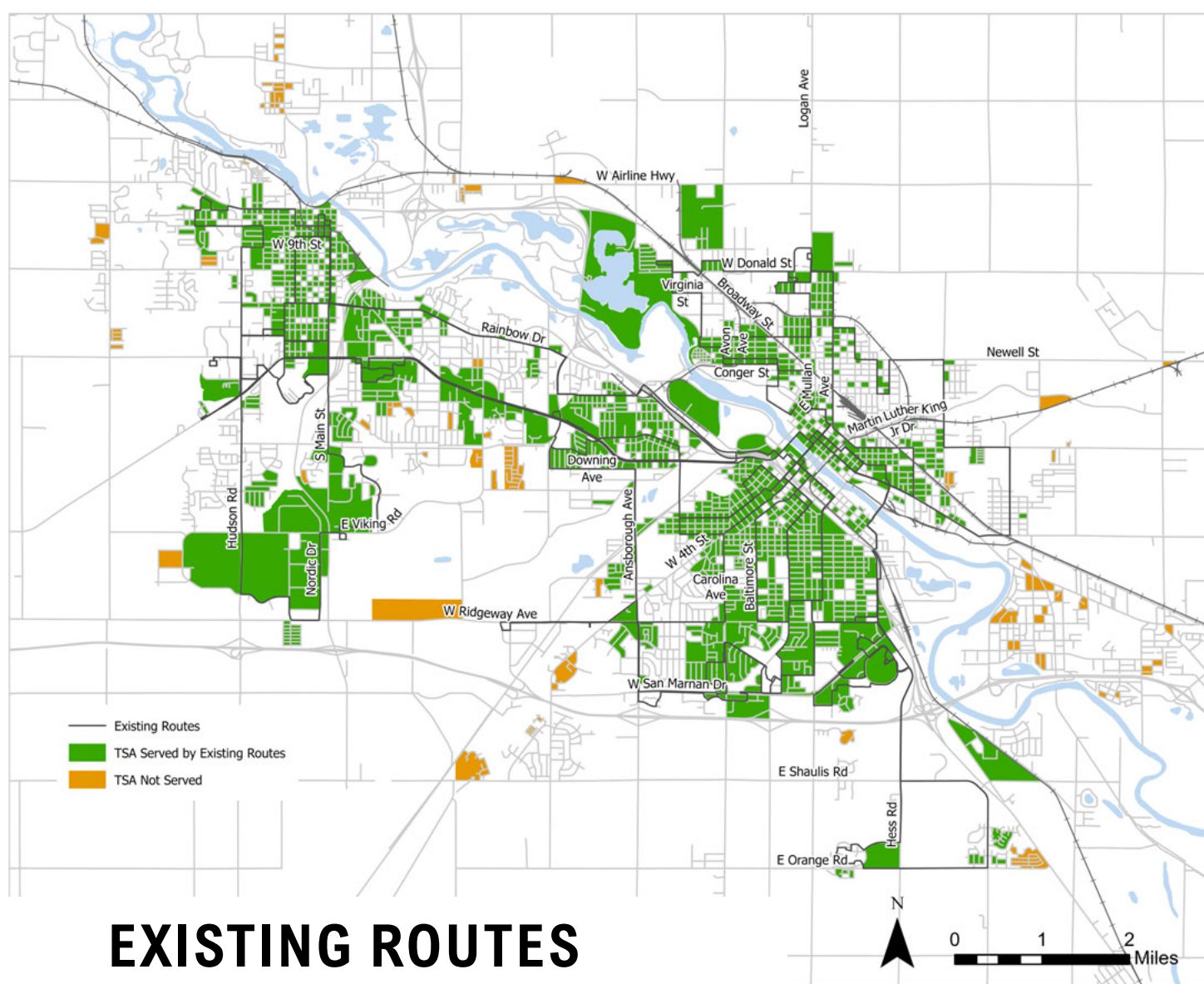


Contacts

David Sturch, MET Transit Manager
 319-234-5714
 d.sturch@mettransit.org

Bill Troe, Project Manager
 SRF Consulting
 402-513-2158
 btroe@SRFConsulting.com

TRANSIT SUPPORTIVE AREAS AND ROUTES

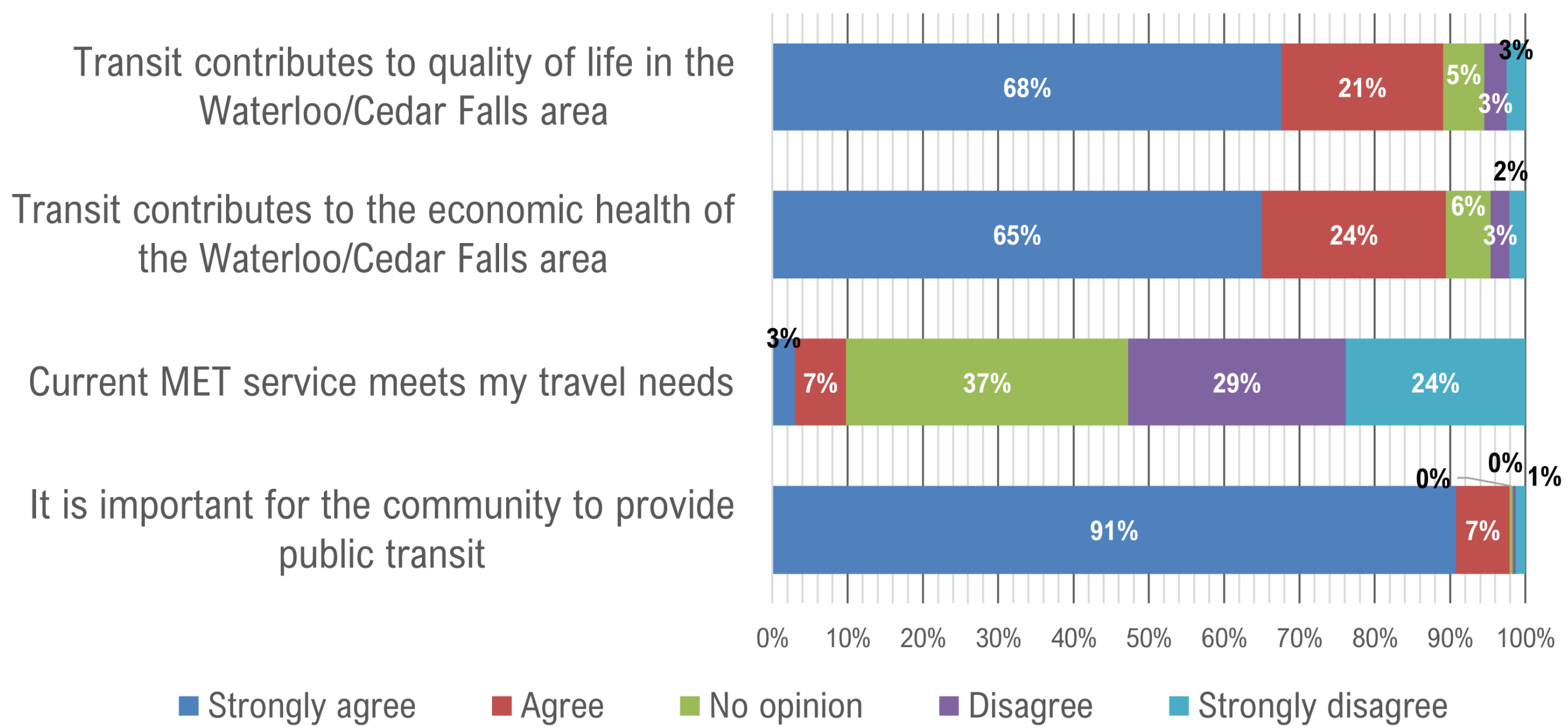


Where is there enough population and/or employment density to support transit?

- GREEN AREAS – Density supports transit and there is service
- GOLD AREAS – Density supports transit, no service
- WHITE AREAS – Not enough density to reasonably support transit

TRANSIT IS IMPORTANT TO THE COMMUNITY

Responses from March 2023 Community Survey



VISIT THE MET TRANSIT WEBSITE FOR MORE INFORMATION

www.METtransit.org

MET TRANSIT IS HIRING

NEW DRIVERS

- Immediate opportunity for full time status with comprehensive benefits package including health insurance, IPERS retirement, vacation and casual days
- No experience necessary, will provide training to obtain the necessary CDL license and driver endorsements

MET Provides Door-to-Door Service for People Who Cannot Use Fixed Route

Visit the Website for More Information